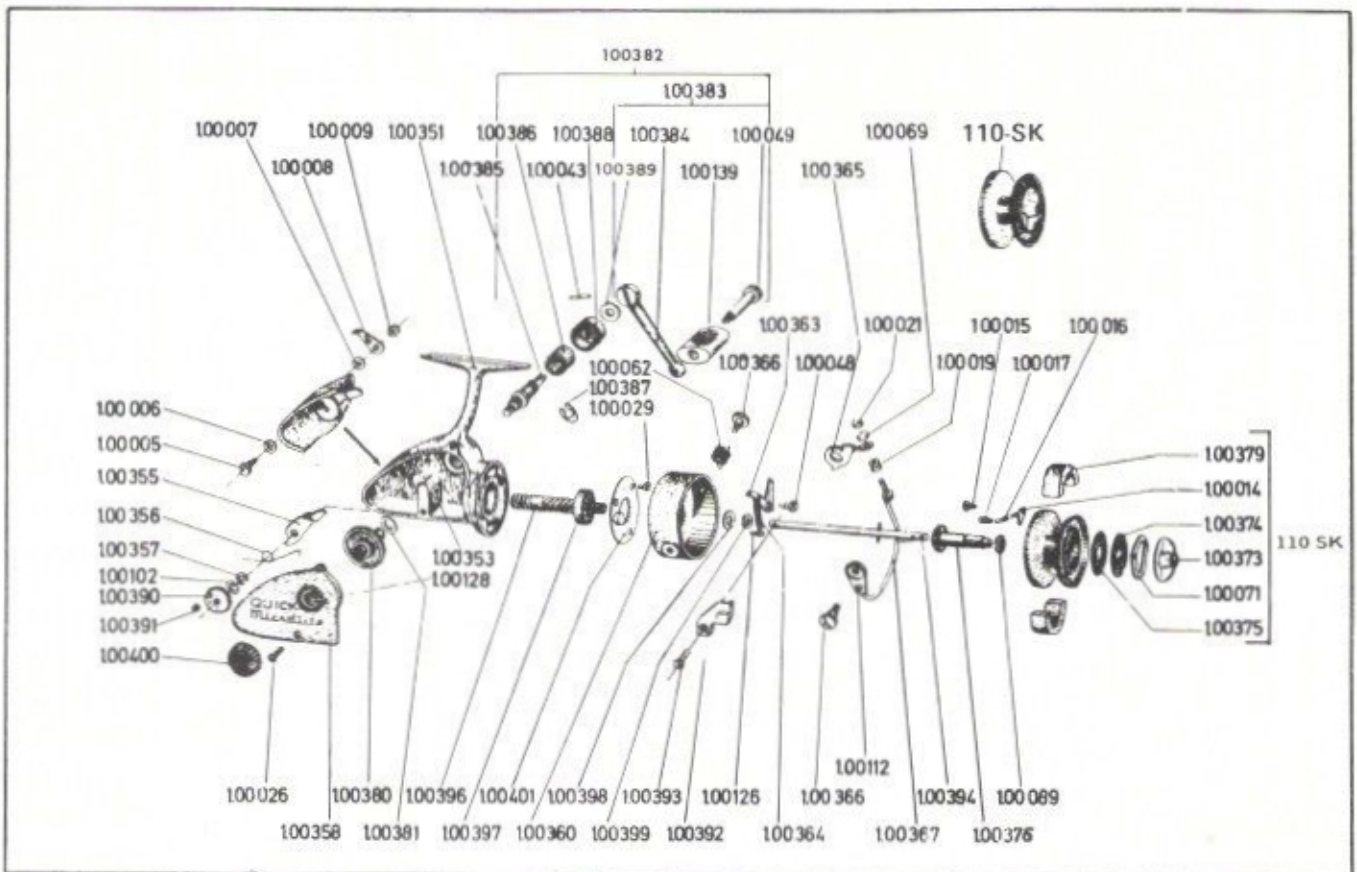


620 TERMINAL WAY • P. O. BOX 938 • COSTA MESA, CALIFORNIA 92627 • (714) 642-1163



IMPORTANT: AN "N" SERIES QUICK SPOOL WILL NOT FIT THIS REEL

QTY	PART NO.	DESCRIPTION	LIST PRICE	PART NO.	DESCRIPTION	LIST PRICE
	100-005	Eccentric bolt	.45	100-364	Spring*	.30
	100-006	Washer	.25	100-365	Angle lever	.75
	100-007	Washer	.25	100-366	Bearing screw	.55
	100-008	Anti-reverse lever	.50	100-367	Bail	2.10
	100-009	Nut	.25	100-373	Drag nut	.95
	100-014	Click tongue	.30	100-374	Washer (metal)	.30
	100-015	Pin	.25	100-375	Washer (nylon)	.25
	100-016	Spring	.30	100-376	Brake spindle w/ratchet wheel	1.55
	100-017	Pin	.25	100-379	Cork ring halves (2)	.30
	100-019	Line guide	2.45	100-380	Drive gear	4.60
	100-021	Hexagon nut	.30	100-381	Washer (spacer)	.25
	100-026	Screw for cover (2 req.)	.25	100-382	Crank arm, complete	4.95
	100-029	Screw for #1.00 401 (3 req.)	.25	100-383	Crank arm, w part 049, 139, 384	1.80
	100-043	Pin for crank arm	.25	100-384A	Crank arm	1.30
	100-048	Lug screw	.25	100-385	Crank axle	.95
	100-049	Grip screw	.35	100-386	Ferrule	.30
	100-062	Bail spring	.40	100-387	Spring clip	.25
	100-069	Lock washer	.30	100-388	Crank nut	.60
	100-071	Spring washer	.25	100-389	Washer	.25
	100-089	Washer (resitex)	.25	100-390	Worm wheel	1.85
	100-102	Washer	.25	100-391	Roller for slide	.30
	100-112	Cover cap	.30	100-392	Slide	.65
	100-126	Pin for spring	.25	100-393	Screw for slide	.25
	100-128	Bearing bushing (2 req.)	.40	100-394	Axle, complete	1.50
	100-139	Handle grip	.30	100-396	Drive shaft w rt. hand thread	4.25
	100-351	Housing	5.00	100-397	Ball bearing	3.40
	100-353	Bushing for drive shaft	.40	100-398	Washer	.25
	100-355	Ratchet lever for anti-reverse	.40	100-399	Hexagon nut	.30
	100-356	Spring	.40	100-400	Cover cap	.40
	100-357	Spring clip	.25	100-401	Trip plate	.55
	100-358	Housing cover w bushing	2.55	110-SK	Spool, complete	8.00
	100-360	Rotating head, rt.hand thread	4.15	***		
	100-363	Trip lever	.35			
					*When out of stock use 100-068	.30